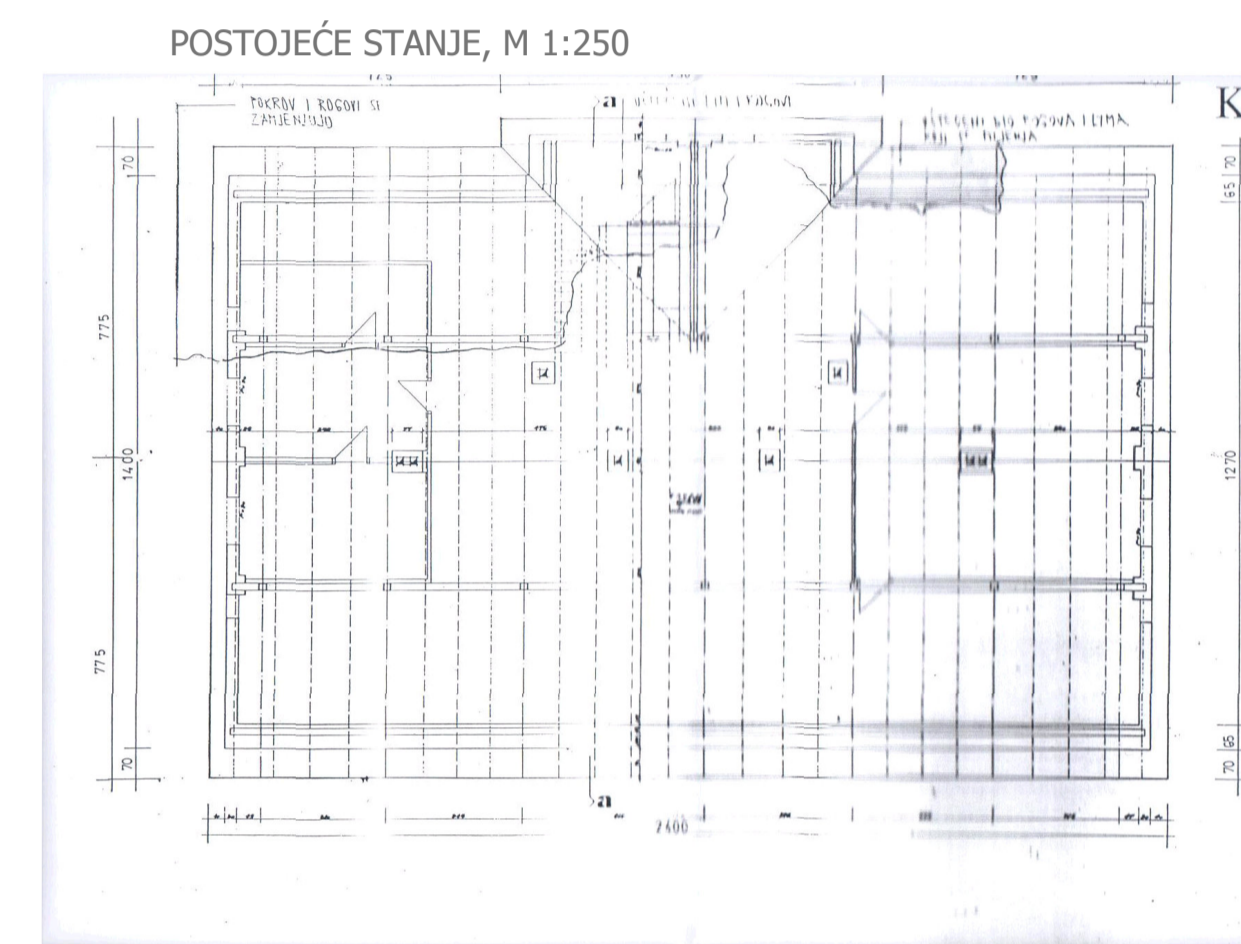
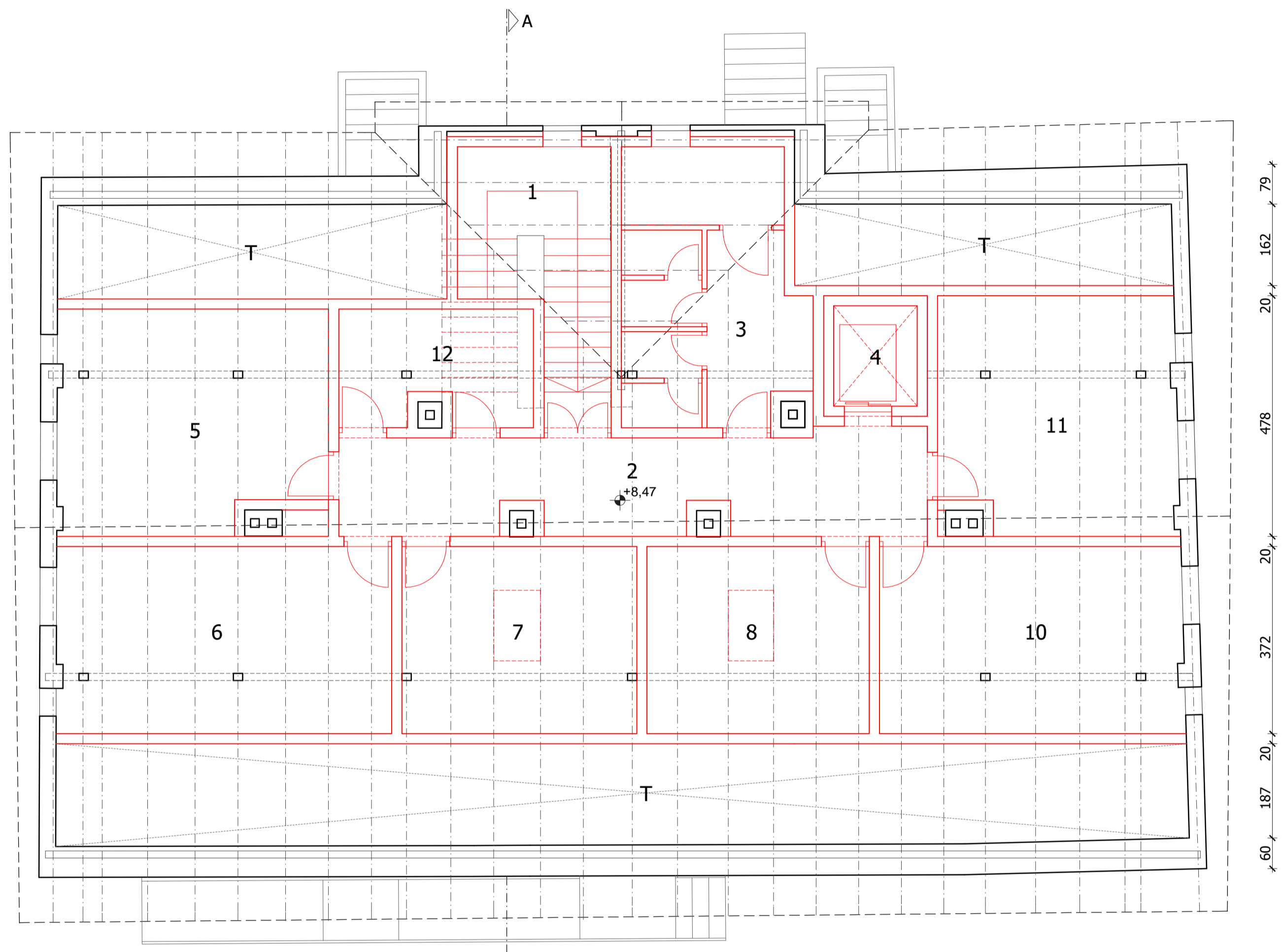


32 539 21 215 21 151 21 133 21 402 206 485 31
 32 539 21 215 21 305 21 324 20 749 31

TLOCRT POTKROVLJA
 KONCEPT 1



PLANIRANO STANJE: glazbena škola 2

- 1 STUBIŠTE P = 12,65 m2
- 2 HODNIK P = 22,17 m2
- 3 SANITARNI PROSTOR P = 16,83 m2
- 4 LIFT P = 3,31 m2
- 5 SOBA - INSTRUMENT 4 P = 22,86 m2
- 6 SOBA - INSTRUMENT 5 P = 24,83 m2
- 7 SOBA - INSTRUMENT 6 P = 17,36 m2
- 8 SOBA - INSTRUMENT 7 P = 16,43 m2
- 9 SOBA - INSTRUMENT 8 P = 22,29 m2
- 10 SOBA - INSTRUMENT 9 P = 21,92 m2
- 11 SPREMIŠTE P = 8,47 m2
- T TAVANSKI PROSTOR P = 71,64 m2

POTKROVLJE NETO UKUPNO P = 260,76 m2

34 541 21 1.169 20 500 35
 34 667 20 467 20 442 20 616 35
 2.320

□ POSTOJEĆE STANJE □ PRIJEDLOG PRENAMJENE



PLAN IUM d.o.o. :: Rastočine 6, Rijeka 51000 :: T:+385 51 263 842 :: planium-doo@h-l.hr

ZGRADA ZGRADA STARE ŠKOLE U DELNICAMA k.č. 14236 k.o. Delnice	INVESTITOR GRAD DELNICE, JEDINSTVENI UPRAVNI ODJEL TRG 138. BRIGADE HV 4, 51300 DELNICE
PROJEKTANT N. OLUJIĆ, dipl.ing.arh	TLOCRT POTKROVLJA
	ARHITEKTONSKA ANALIZA POSTOJEĆEG STANJA ZGRADE K O N C E P T 1
	MJERILO 1:100
	DATUM 11/13
	BROJ PROJEKTA 23/13-26/13
	LIST: 5